



# PRO tiles

NEW GENERATION ENGOBE GLAZED ROOFING TILES





IGM MLADOST is one of the region's largest and most significant construction material manufacturers, with a long-standing tradition of over 112 years. A recognized name on the market, a synonym for quality roofing tiles and masonry blocks which, in addition to the domestic market, have found their way to satisfied users in many EU, Russian, Belarusian, and neighboring countries markets thanks to their quality.

The company comprises five factories in the south of Serbia:

two ceramic tile manufacturing plants in Leskovac and three different format masonry block manufacturing plants in Mala Plana (near Prokuplje), Vlasotince, and Stalać. Since their privatization, all the company's factories have been comprehensively invested into continuously to accomplish the core concept of putting constant efforts into improving product quality and range in order to meet the demands and needs of different markets and users. Investments in state-of-the-art technology and equipment, in building, organization, modernization of all business processes, marketing, and human resources are particularly significant. The continuous process of investment in manufacturing quality is also recognized by end users, so the market for our products expands and our market share increases year after year.

The investment cycle crown is the greenfield investment and the opening of a new premium quality and large format "PRO" series tile manufacturing plant. The plant was put into operation in 2022. It was designed and outfitted with the best technology and equipment by renowned world manufacturers and designers, ranking it among the most modern plants in Europe. Plaster molds are used for production, so the products are characterized by perfect lines and high aesthetic values. In the new plant, each tile is fired separately in an H-shaped container kiln at a high temperature of over 1030°C, which rules out any possibility of product deformations, so the final products are characterized by perfect geometry and exceptional technical characteristics. As for the range, the new plant produces a complete "PRO" roofing system with different tile models in different colors and gloss (reflection) degrees. All "MLADOST" and "PRO" products are certified in several internationally recognized institutes, and rigorous testing is carried out daily in all plant production process stages in the modern in-house laboratory. Based on the obtained technical characteristics results, PRO roofing tiles are covered by a 50-year warranty.





GLOSS



## MLADOST Kontinent PRO



MATTE



MLADOST

# Kontinent PRO



Kontinent PRO is a premium large-format tile model produced in the new plant using the latest technology. It is plaster mold pressed, which gives it perfectly sharp lines. Considering that each tile is fired separately in an H-shaped container kiln at over 1030°C, it is characterized by perfect geometry and excellent technical properties. Thanks to these characteristics, it perfectly fits and closes the roof surface. It is manufactured in black, brown, and red, each in two reflection varieties: matte and gloss. It is characterized by sliding installation, which makes it adjustable to different, already installed roofing structures (batten spacing).



Weight : 3.85 kg



Length : 480 mm



Width : 290 mm



Cover length : 40.7 cm



Cover width : 25 cm



Consumption per m<sup>2</sup> : 10 pcs.



Number on a pallet : 280 pcs.



Pallet weight : 1.140 kg



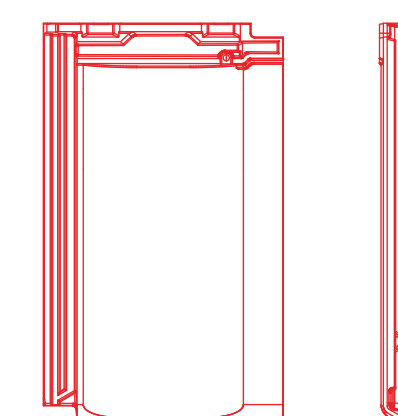
Minimum roof pitch : 15°



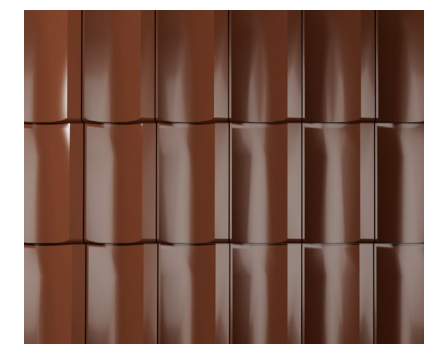
Batten spacing : 40.5 cm

290

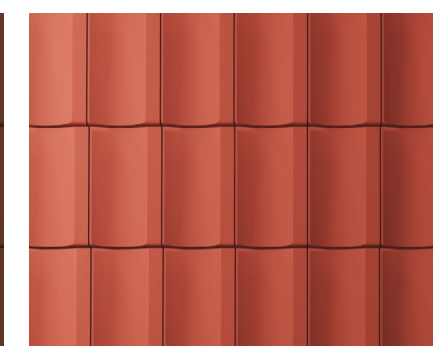
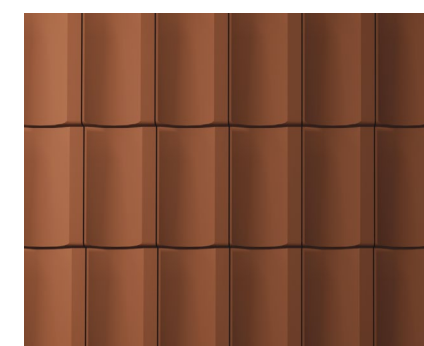
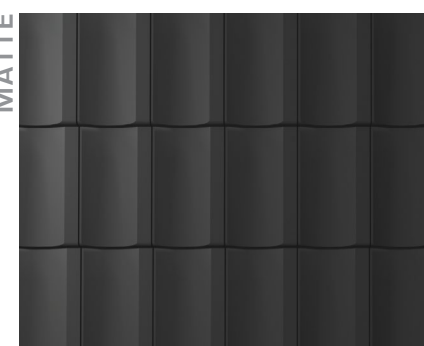
480



GLOSS



MATTE





GLOSS



## MLADOST Tradicional PRO



MATTE



MLADOST

# Tradicional PRO



Tradicional PRO is a premium large-format tile model produced in the new plant using the latest technology. Thanks to the plaster molds used for pressing, it is characterized by an exceptional finish. Each tile is fired separately in an H-shaped container kiln at over 1030°C, so it is characterized by perfect geometry and excellent technical properties. Thanks to these characteristics, it perfectly fits and closes the roof surface just like all other PRO series tiles. It is manufactured in black, brown, and red, each in two reflection varieties: matte and gloss. It is characterized by sliding installation, which makes it adjustable to different, already installed roofing structures (batten spacing).



Weight : 3.85 kg



Length : 480 mm



Width : 290 mm



Cover length : 40.7 cm



Cover width : 25 cm



Consumption per m<sup>2</sup> : 10 pcs.



Number on a pallet : 280 pcs.

Pallet weight : 1.140 kg



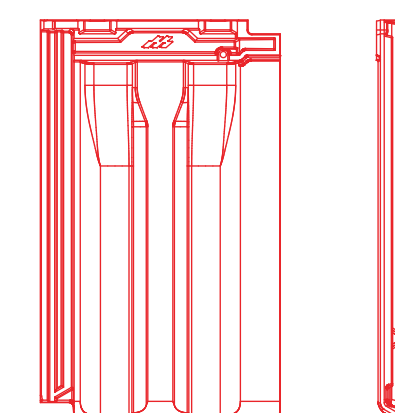
Minimum roof pitch : 15°



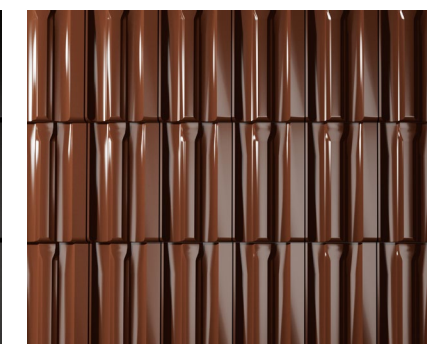
Batten spacing : 40.5 cm

290

480



GLOSS



MATTE

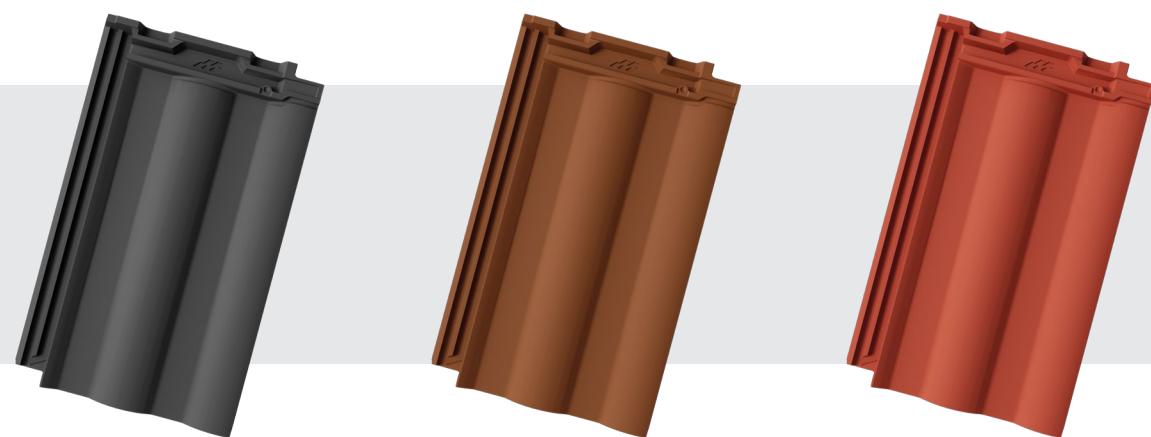




GLOSS



## MLADOST Horizont PRO



MATTE



# MLADOST Horizont PRO

**50**  
YEAR  
WARRANTY

Horizont PRO is a premium large-format tile model produced in the new plant using the latest technology. It is plaster mold pressed, which gives it perfectly sharp lines. Considering that each tile is fired separately in an H-shaped container kiln at over 1030°C, it is characterized by perfect geometry and excellent technical properties. Thanks to these characteristics, it perfectly fits and closes the roof surface. It is manufactured in black, brown, and red, each in two reflection varieties: matte and gloss. Like all MLADOST tiles, it is characterized by sliding installation, making it adjustable to different, already installed roofing structures (batten spacing).



Weight : 3.85 kg



Length : 480 mm



Width : 290 mm



Cover length : 40.7 cm



Cover width : 25 cm



Consumption per m<sup>2</sup> : 10 pcs.



Number on a pallet : 280 pcs.

Pallet weight : 1.140 kg



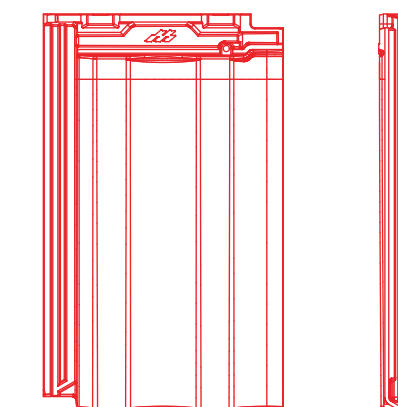
Minimum roof pitch : 15°



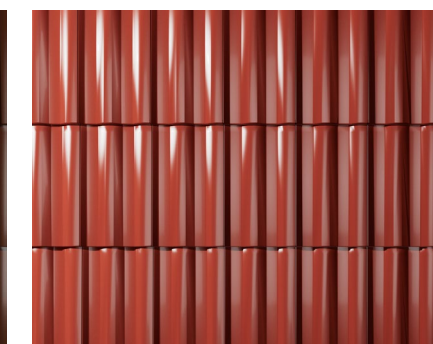
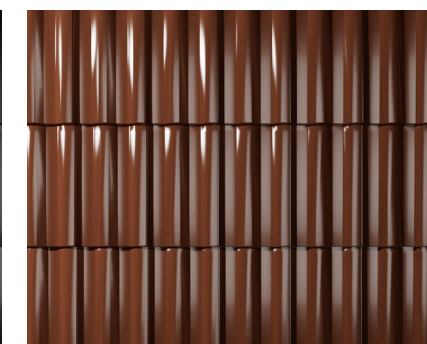
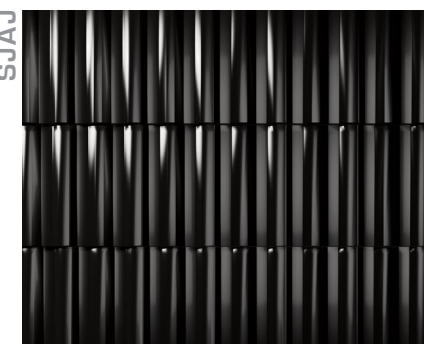
Batten spacing : 40.5 cm

290

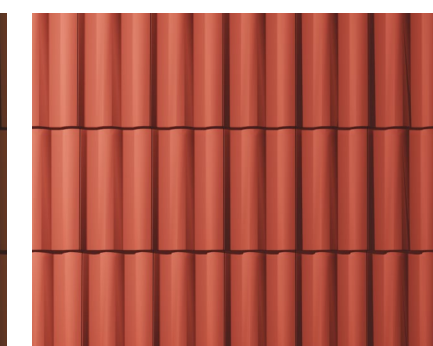
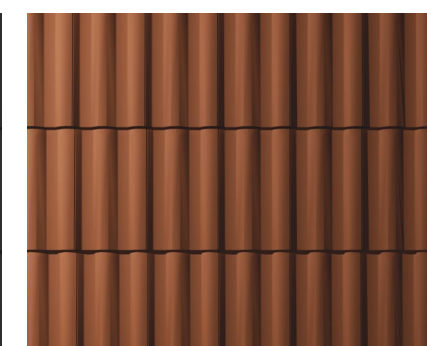
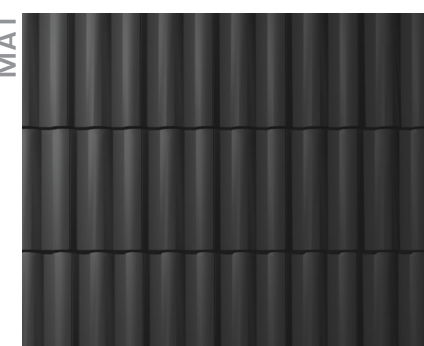
480



SJAJ



MAT



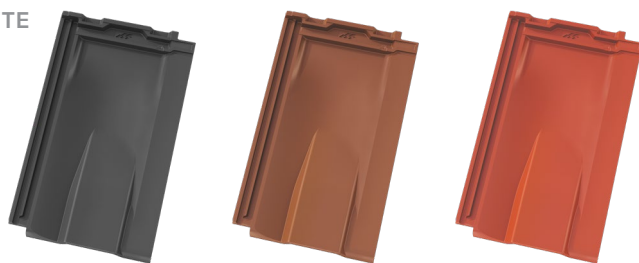
# SPECIAL ELEMENTS

## MLADOST Vent tile PRO

GLOSS



MATTE



Vent tiles are used for effective roof ventilation to eliminate any condensation and moisture collection.

They are installed as follows:

- for air inlet  
in the second row from the bottom  
(from the eaves)
- for air outlet  
in the second row from the bottom  
(from the ridge)

Weight : 4.10 kg  
Length : 480 mm  
Width : 290 mm  
Batten spacing : 40.5 cm  
Recommended roof pitch : 30°  
Minimum roof pitch : 15°  
Number on a pallet : 140 pcs.  
Pallet weight : 610 kg

## MLADOST Snowguard PRO

Snowguards prevent larger snow masses from sliding off the roof when melting. They are installed near eaves above the vent tiles to allow proper roof ventilation during the winter period. Snowguards layout depends on the altitude and roof pitch.

GLOSS



MATTE



Weight : 3.90 kg  
Length : 480 mm  
Width : 290 mm  
Batten spacing : 40.5 cm  
Recommended roof pitch : 30°  
Minimum roof pitch : 15°  
Number on a pallet : 128 pcs.  
Pallet weight : 530 kg

## MLADOST Ridge tile PRO



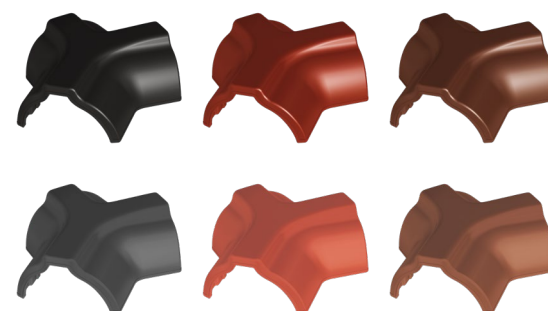
Weight : 3.35 kg  
Length : 385 mm  
Width : 210 mm  
Consumption (pcs/m) : 2.8 pcs.  
Number on a pallet : 160 pcs.  
Pallet weight : 565 kg

## MLADOST Ridge end cap PRO



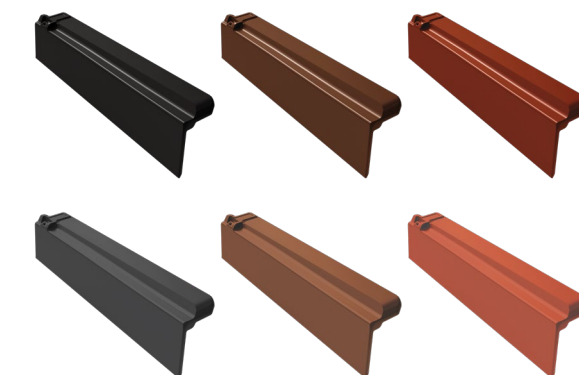
Weight : 3.18 kg  
Length : 390 mm  
Width : 205 mm  
Number on a pallet : 32 pcs.  
Pallet weight : 130 kg

## MLADOST Three-way ridge PRO

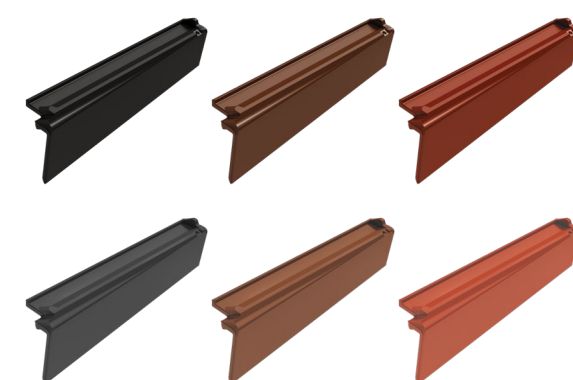


Weight : 2.42 kg  
Length : 314 mm  
Width : 328 mm  
Number on a pallet : 32 pcs.  
Pallet weight : 110 kg

## MLADOST Edging - left and right PRO

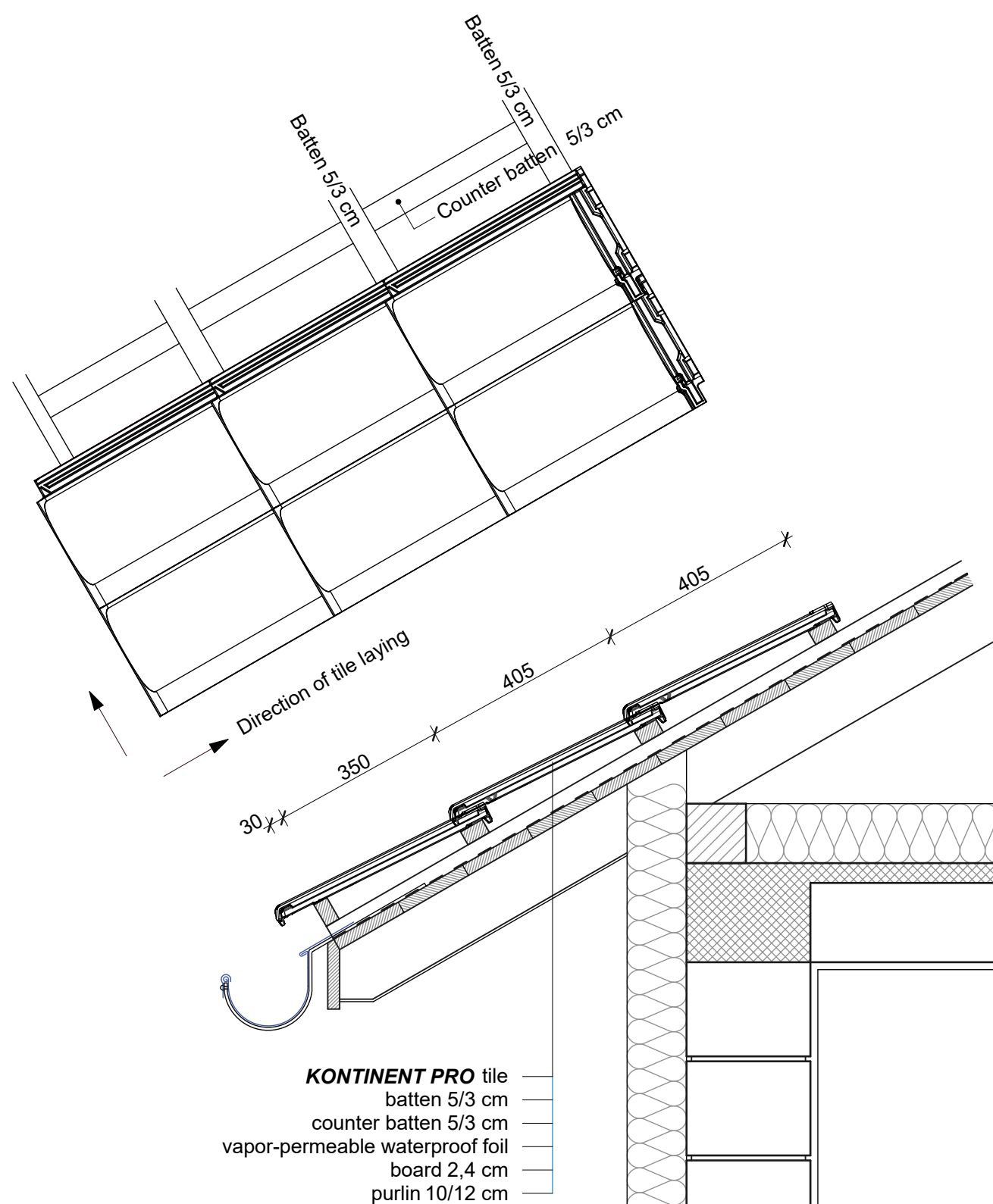


Weight : 2.50 kg  
Length : 480 mm  
Consumption (pcs/m) : 2.5 pcs.  
Number on a pallet : 84 pcs.  
Pallet weight : 235 kg

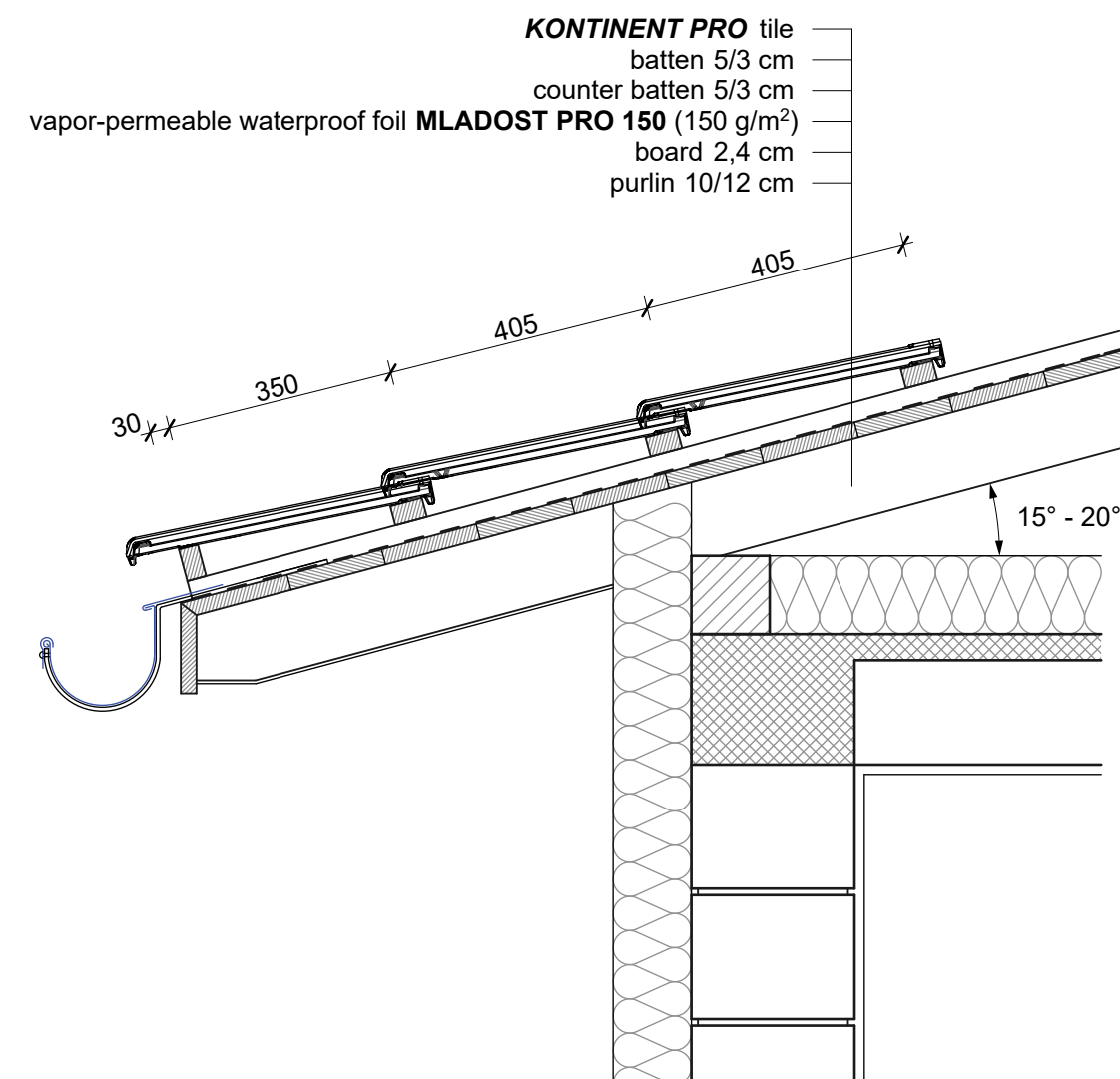




# Roof eaves covering detail



# Low-pitch roof eaves covering detail



- Roofing foil MLADOST PRO 150 weight 150 g/m<sup>2</sup>  
multilayer membrane : - bottom side vaporpermeable  
- upper side waterproof
- Foil laying - parallel to eaves
- Folds 10 - 15 cm
- A sealing strip is placed under the counter batten
- Safety measures - ladder for walking on the roof

# ROOFING EQUIPMENT

## MLADOST Ridge strip

A universal element for dry installation of ridges that allows ventilation under ridge tiles. Edges of both ridge strip sides have self-adhesive strips for attaching to the tile.



## MLADOST Ridge batten grip

Ridge batten fastening element. Use and proper placement ensure accurate and straight ridge tile line.



## MLADOST Bird netting

Bird netting is used at the bottom roof ventilation openings to prevent birds and insects from entering the roof structure.



## MLADOST Ridge tile clip

A metal element used to fasten ridge tiles in the dry installation process.



## MLADOST Metal snowguard for Kontinent PRO

Prevents snow sliding off, intended for the Kontinent PRO model.



## MLADOST Metal snowguard for Tradicional PRO

Prevents snow sliding off, intended for the Tradicional PRO model.



## MLADOST Roofing foil 90g and 150g

Waterproof vaporpermeable roof foils allow proper drying of the structure and insulation materials, increase thermal insulation properties, extend the structure service life, and prevent pest penetration.

tile / model:

date of purchase:

name, registered office and seal of company:

address of installation facility:

account number:

customer:

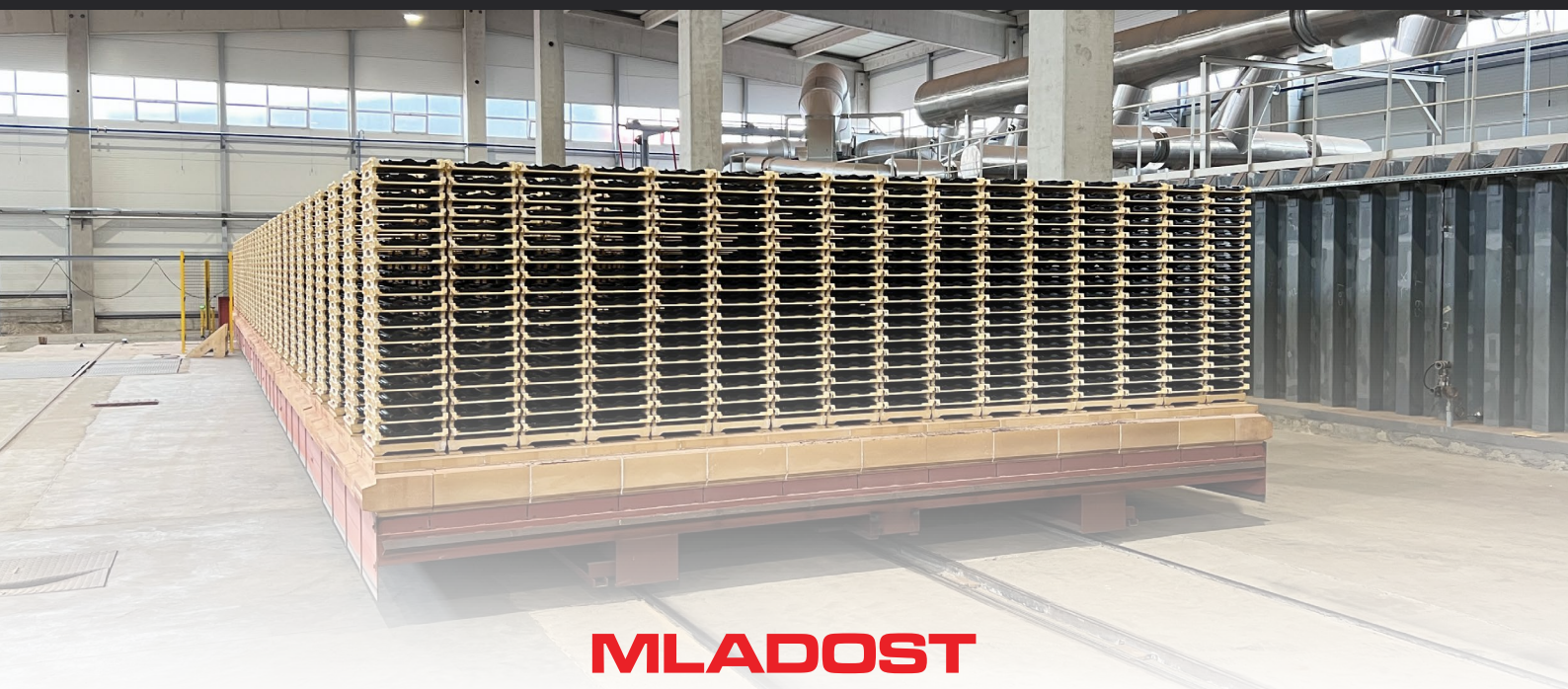


## WARRANTY CARD

### 50-YEAR WARRANTY

1. IGM MLADOST guarantees that the delivered tiles will meet the quality criteria set by national standards SRPS EN 1304 and SRPS EN 1024, SRPS EN 538, SRPS EN 539-1, SRPS EN 539-2 throughout the specified period (50 years).
2. If, in the warranty period, a tile fails to meet any of the criteria from the above standards essentially affecting its function, IGM MLADOST shall replace all tiles with noted defects related to the roof tile characteristics from the warranty conditions.
3. Defects related to:
  - mechanical damage caused by force majeure (e.g., natural disasters),
  - temporary aesthetic changes to the tile that do not reduce its function, whether caused by transport, handling, or are the result of harmful environmental influences,
  - use of roof tiles other than intended
4. The customer shall install the tiles according to the RULE ON TECHNICAL STANDARDS FOR DESIGN AND EXECUTION OF FINISHING CONSTRUCTION WORKS, as well as manufacturer instructions which are related to product application, supplied with the product, and valid at the time of roof construction.
5. The 50-year guarantee applies only in cases where the conditions referred to in points 2 and 4 are met.
6. The warranty period starts from the month and year of tile production (the month and year of production are indicated by a permanent mark on the back of the tile).
7. When making a complaint about tile quality, the customer shall:
  - send the complaint in writing to the manufacturer
  - specify tile type, quantity, place of installation, reasons for complaint, date of purchase, and type of damage
  - attach to the complaint a purchase receipt and warranty card.
8. The warranty applies to the following types of tiles: Kontinent PRO, Tradicional PRO, Horizont PRO





# MLADOST

**IGM MLADOST D.O.O. LESKOVAC**

Puškinova bb, 16000 Leskovac | tel: +381 (0)16 243 073 | fax: +381 (0)16 255 507 | email: [office@mladost.co.rs](mailto:office@mladost.co.rs)  
[prodaja@mladost.co.rs](mailto:prodaja@mladost.co.rs)

[www.mladost.co.rs](http://www.mladost.co.rs)

## **MALA PLANA BRANCH**

Industrijska zona bb, 18423 Mala Plana  
tel: +381 (0)27 343 999  
fax: +381 (0)27 343 511  
email: [office.tmp@mladost.co.rs](mailto:office.tmp@mladost.co.rs)

## **VLASOTINCE BRANCH**

Industrijska zona bb, 16210 Vlasotince  
Tel: +381 (0)16 875 432  
Fax: +381 (0)16 875 513  
email: [office.vlasotince@mladost.co.rs](mailto:office.vlasotince@mladost.co.rs)

## **STALAĆ BRANCH**

Jug Bogdanova bb, 37212 Stalać  
tel: +381 (0)37 806 200  
fax: +381 (0)37 806 806  
email: [office.stalac@mladost.co.rs](mailto:office.stalac@mladost.co.rs)